



geodata4edu.ch

Launch Event

6 March 2017

Get to know geodata4edu.ch

**The national portal
for geodata in
teaching and research**



Programme

- 14:15** Welcoming address
- 14:20** Opening words from Roland Dietlicher (swissuniversities)
- 14:30** Keynote speech by Prof Dr Martin Raubal (ETH Zurich)
«Challenges and opportunities of using geodata in mobility and energy»
- 14:50** Presentation of geodata4edu.ch
Benefits and functions of the service
Be part of geodata4edu.ch
- 15:30** Questions and Answers
- 15:50** Information desks
- 16:15** Closing (followed by drinks)

This handout contains:

- Programme
- Search
- Data access
- Available Data
- Costs
- List of today's participants

Search

Search field

Search terms can be entered via the search field and may include titles of a dataset, keywords or topics.

Multilingual searches

Searches are multilingual. If an English term is entered, the corresponding term in German and French will also be searched for and vice versa.

List of results

The list of results comprises all the results found and displays them according to relevance. The results contain references to the data owners, the terms of use, the coordination system, a brief abstract etc. The meta-data is displayed in the language in which the owner of the data or the service provides it (usually German or English).

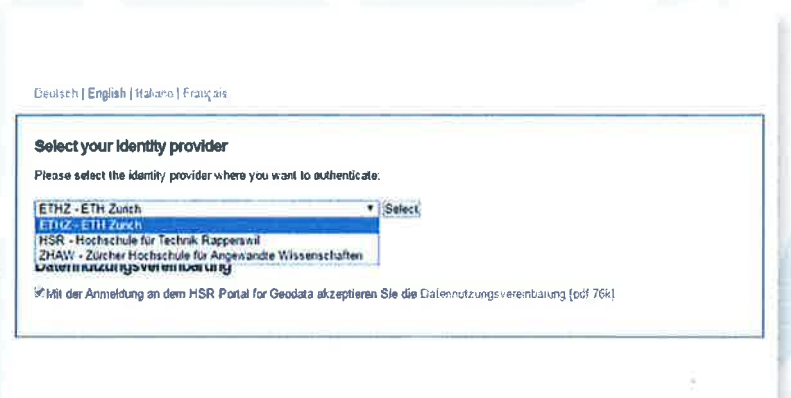
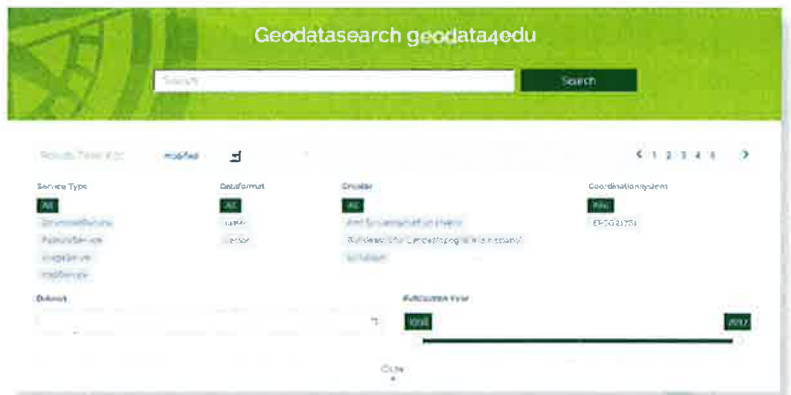
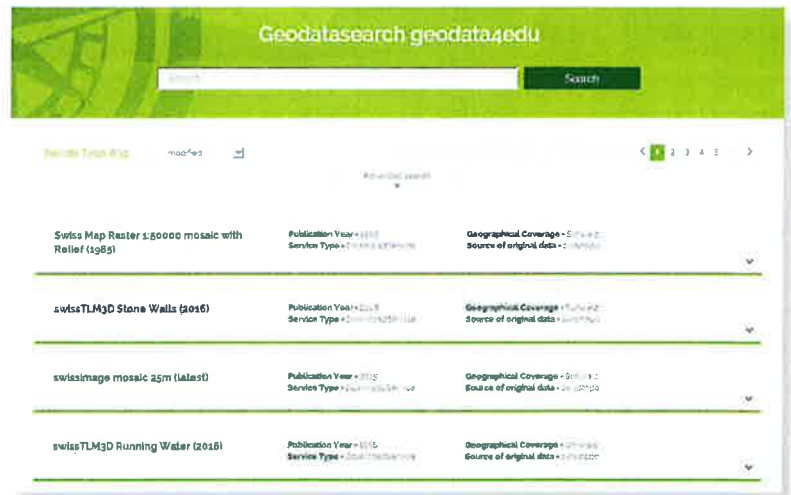
Filters

The number of results can be narrowed down further via various filter functions (e.g. service type, data format, timeframe).

Authentication

The authentication process depends on the service selected:

- For the download service, the log-in window appears after clicking on the link in the search catalogue. The user needs to register via the SWITCHaai authentication window. The selected dataset will then be displayed on the browser.
- For access to a web service dataset, the corresponding dataset is loaded into the desktop GIS as a geo-web service via the link in the detailed view of the results. The authentication is performed directly in the desktop programme.



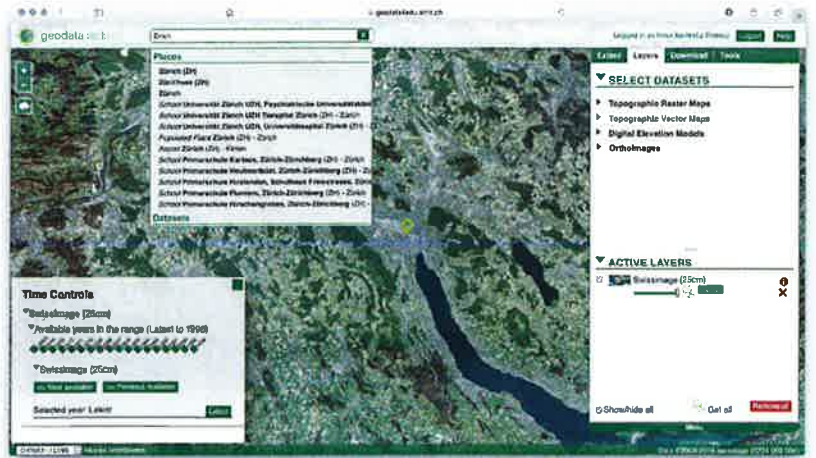
Data access

Download service



Display

The dataset selected (e.g. swiss-image) is automatically added to the "active layers" and displayed.

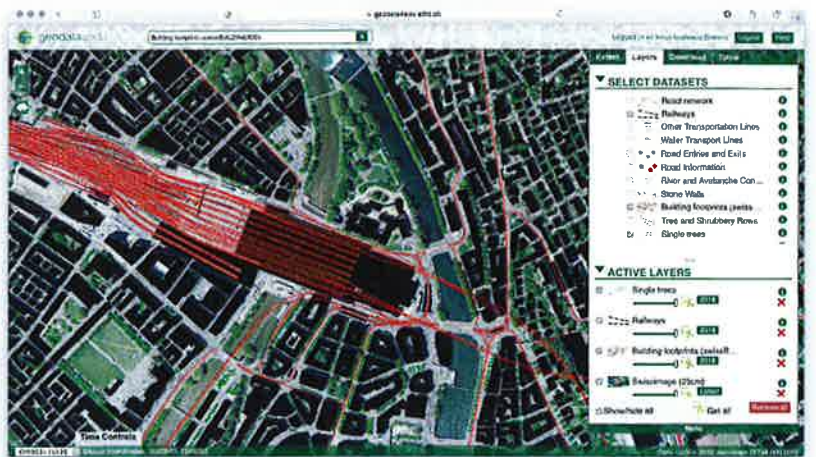


Time controls

Various timeframes can be selected for the data via "Time controls". It is possible to zoom directly with the mouse or by entering the desired locality in the search field (e.g. Zurich).

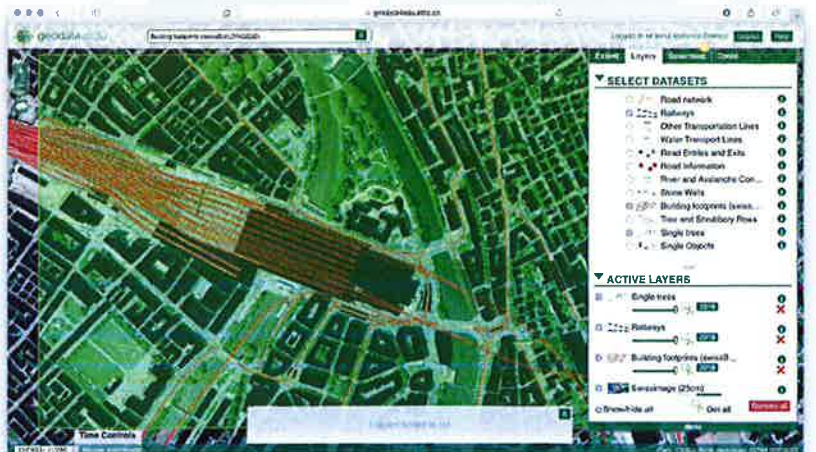
Thematic datasets

Additional datasets can be displayed (e.g. swissTLM3D rail lines). These are either sought via the search field or selected directly via "Select datasets".



Downloading

For the download, an extract ("extent") needs to be defined (by selecting it directly with the mouse or entering coordinates). The selected datasets ("active layers") are then added to the "download list" individually or altogether ("get all"). It is possible to save the download list or share it with other users.



Data access

Web services

After authentication

The dataset selected is displayed on the desktop GIS.

Individualized usage

Various functionalities can be used in the desktop GIS:

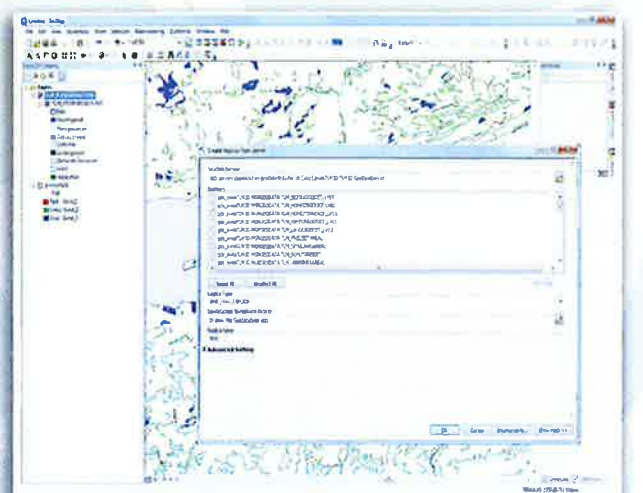
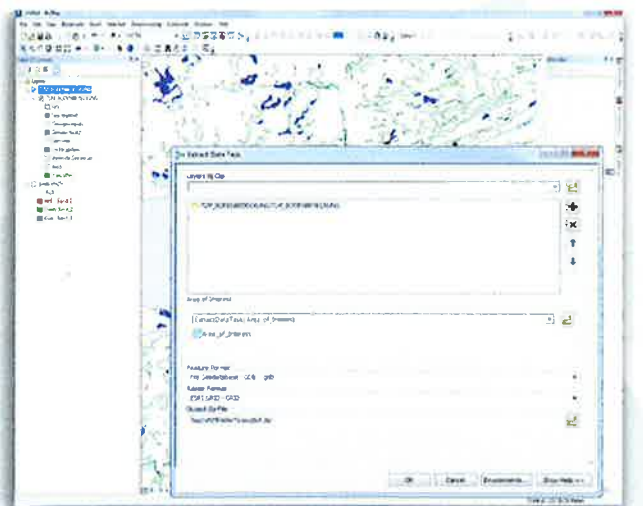
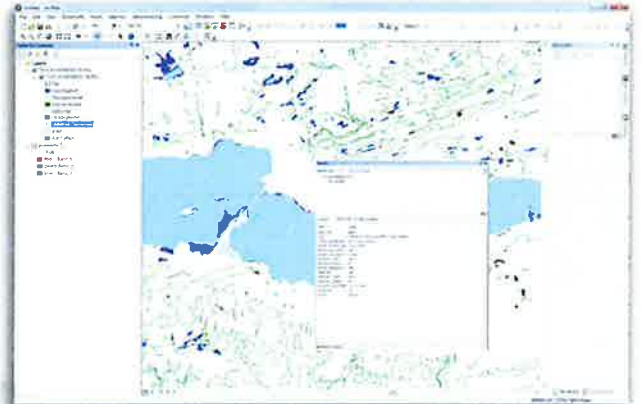
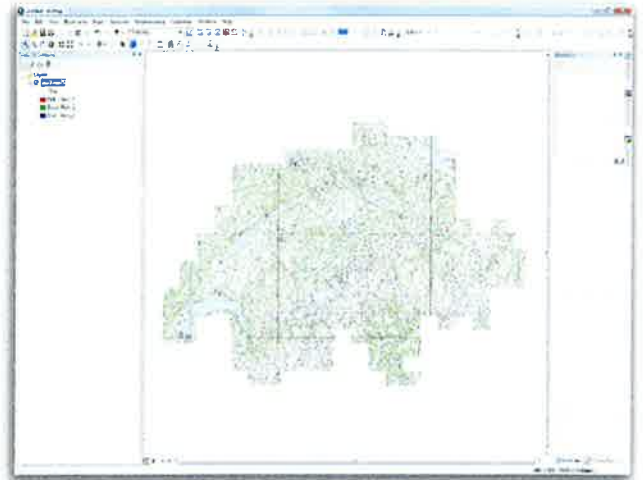
- Adding geodata from geodata4edu.ch or other data sources and formats
- Changing symbolisation and processing the geodata further
- Displaying object details

Local saving

For extensive analyses, the data can be saved locally. Datasets can be saved in various formats via "Extract data" and processed further.

Further processing

Entire datasets, including data models, can be saved and processed further via "Replica".



Available Data

geodata4edu.ch offers a comprehensive range of geodata comprising selected geodata from federal offices and cantons that requires a license.

Landscape models

Elevation models

Ortho images

National maps

Technical data



Image SwissFLM3D, reproduced by permission of swisstopo (JA100120)

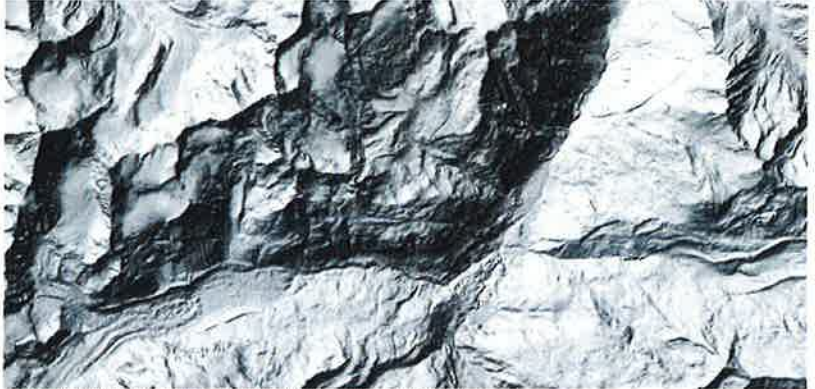


Image SwissALT3D (relief), reproduced by permission of swisstopo (JA100120)



Image swissimage 25m, reproduced by permission of swisstopo (JA100120)



Image Swiss Map Raster 25, reproduced by permission of swisstopo (JA100120)



Agricultural parcels in the Canton of Zurich, © Kanton Zurich

Costs

Cost-effective trial until end of 2018

Concept

Initial costs	<ul style="list-style-type: none"> Favourable conditions until end of 2018 due to project funding by swissuniversities and funds and resources of ETH Zurich and HSR (final cost model starting from 2019) Payable in 2017 or 2018
Benefits	<ul style="list-style-type: none"> Access for entire institutions Unlimited data and service usage (according to terms of conditions)
Conditions	<ul style="list-style-type: none"> All contracts need to be signed Contracts limited until the end of 2018 (longterm contracts from 2019)

Contributions

The costs are based on the total number of students and staff members of the respective institution.

Contribution group	Total number of students and staff	Costs until 2018	Yearly costs from 2019 (estimated)
A	< 5'000	2'000 CHF	20'000 CHF
B	5'000 - 10'000	4'000 CHF	40'000 CHF
C	10'000 - 20'000	6'000 CHF	60'000 CHF
D	> 20'000	8'000 CHF	80'000 CHF

Today's participants

Baumann Daniel	Berner Fachhochschule	IT system engineer
Bekavac Bernard	HTW Chur	CHeval
Bereuter Pia	Fachhochschule Nordwestschweiz	Professor of Geoinformation Science
Bindella Silvio	Università della Svizzera Italiana	Library
Bleisch Susanne	Fachhochschule Nordwestschweiz	Geovisualization scientist
Braillard Luc	Université de Fribourg	Geoscience lecturer and senior researcher
Brinksma Jan Dirk	Universität Bern	Library
Composto Sarah	HEIG-VD	Scientific collaborator
de Bono Andrea	GRID-Geneva	Data officer
Dietlicher Roland	swissuniversities	SUK P-2 programme leader
Dupont Audrey	HES-SO Valais-Wallis	Computer science researcher
Espونا Lucia	WSL	Software engineer
Fries Matthias	Universität Bern	Geoinformation scientist
Grossmann Barbara	Universität Zürich	Scientific librarian
Heinimann Andreas	Universität Bern	Geography senior researcher
Heitzler Magnus	ETH Zürich	
Hirzel Alexandre	Université de Lausanne	GIS and geodata manager
Hofmann Stephanie	Lib4RI	InfoServices group leader
Jaggi Konrad	SWITCH	
Jambé Carmen	Université de Lausanne	Data manager officer
Koblet Thomas	ESRI Suisse	Environment and education
Krauer Juerg	University of Bern	Head Geoinformatics
Künzler Reto	swisstopo	STA Geodata4SwissEDU
Lacroix Pierre	Université de Genève	Lecturer enviroSPACE
Mattmann Beat	Universität Basel	Library
Niederhuber Monika	ETH Zürich	Geoinformation scientist
Prêtre Pascale	Université de Neuchâtel	Library
Raubal Martin	ETH Zürich	Professor of Geoinformation Engineering
Schaller Christoph	Berner Fachhochschule	Geoinformation scientist
Schmitt Hans-Michael	HSR Hochschule für Technik Rapperswil	Professor of landscape planning
Steiner Brian	Universität Basel	Geoinformation scientist
Tonini Marj	Université de Lausanne	Earth Surface Dynamics Research Leader
Upton Alex	ETH Zürich	Community Project Manager
Wunderle Stefan	Universität Bern	Remote Sensing Research Group
Wüst Ruth	Kanton Aargau	Aargauer Kantonsbibliothek
Babel Anna	ETH Zürich	geodata4edu.ch Team
Engelke Dirk	HSR Hochschule für Technik Rapperswil	geodata4edu.ch Team
Konos Charalampos	ETH Zürich	geodata4edu.ch Team
Hurni Lorenz	ETH Zürich	geodata4edu.ch Team
Iosifescu Ionut	ETH Zürich	geodata4edu.ch Team
Meier Patricia	HSR Hochschule für Technik Rapperswil	geodata4edu.ch Team
Müller Kalin	HSR Hochschule für Technik Rapperswil	geodata4edu.ch Team
Piguet Arlette	ETH Zürich	geodata4edu.ch Team
Walt Roman	ETH Zürich	geodata4edu.ch Team